

PRESENTING THE 4TH ANNUAL


National Acquired Brain Injury Conference

Improving choice, quality and service delivery for the changing needs of people living with an ABI

8 – 9 November 2016 | Royal Rehab, Ryde, Sydney



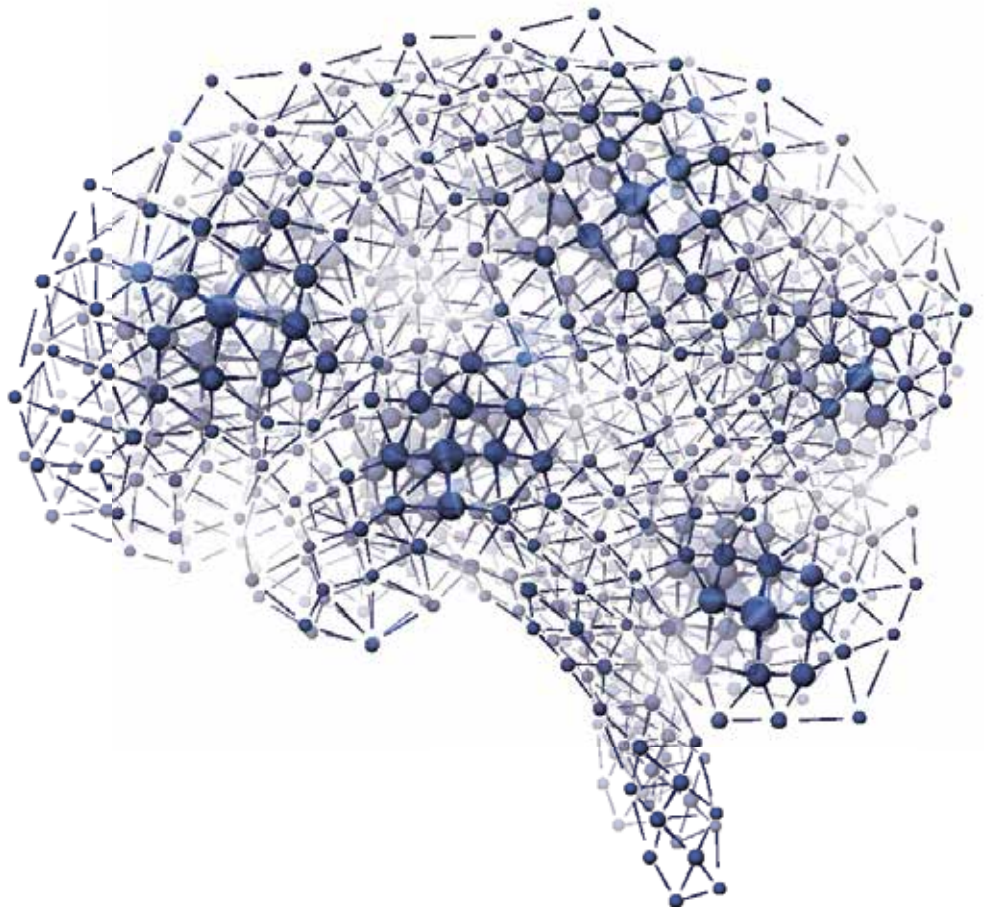
INTERNATIONAL KEYNOTE PRESENTATION:

Barry Willer, *Ph.D. Professor,*
University at Buffalo, USA 

TBI as a chronic condition - Short & long term consequences

2016 HIGHLIGHTS:

- Paediatric ABI - Service provision recommendations for return to school
- Embrace technology to enhance recovery, engage & motivate clients
- Challenges of receiving & providing a care program at home
- Specific goal driven neurological rehabilitation
- Collaboration & cooperation between services
- Concussion - Evaluation, management & education
- Alcohol & drug related brain injury
- TBI & family violence
- Aphasia awareness – Consumer driven initiative
- Person centred partnership to enable full engagement in life
- Health disability interface implication for NDIS
- Lived experience based peer support programs in an NDIS world
- Workforce issues & training for disability support workers
- Resilience, participation & belonging post ABI
- Vocational opportunities & increase coping skills & self-confidence



SUPPORTED BY:



DO NOT MISS
OPTIONAL SITE VISIT –
ROYAL REHAB



REGISTER NOW > www.informa.com.au/abi



8:30 Registration & Coffee

9:00 **Opening Remarks from the Chair**

Nick Rushworth, *Executive Officer, Brain Injury Australia*

9:10 **WELCOME ADDRESS**

Stephen Lowndes, *CEO, Royal Rehab, Ryde, Sydney*

9:20 **Consumer Opening Presentation**

Speaker to be advised

9:50 **INTERNATIONAL KEYNOTE PRESENTATION**

TBI as a Chronic Condition - Short & Long Term Consequences

- Severe TBI is marked by progressive decline in health & cognition
- Recent evidence suggests that TBI involves progressive neurodegeneration
- There is high prevalence of neuroendocrine dysfunction after TBI affecting multiple aspects of health
- Life expectancy after severe TBI is substantially less robust than we assumed

Barry Willer, *Ph.D. Professor, University at Buffalo, USA*



10:40 Morning Tea & Networking

11:10 **Paediatric ABI – Service Provision Recommendations for Return to School**

- Problems that children experience following a TBI
- Importance of active engagement in education system as an important part of a child's life
- Typical problems experienced returning children to the school system following ABI
- Practical approach to developing educational guidelines for children with ABI
- Moving towards approaches for greater integration between hospital & school

Audrey McKinlay, *Senior Lecturer, University of Melbourne*

11:50 **Embracing Technology to Enhance Recovery**

- Recent technological developments in robotic devices & neuroprosthetics improve motor function & participation in children with ABI's when incorporated within a neuroplasticity based framework
- Results from our Robotic program & case studies to demonstrate innovative techniques & positive outcomes for children attending sub-acute tertiary rehabilitation in WA

Dr Jane Valentine, *Head of Dep't Paediatric Rehabilitation, Princess Margaret Hospital; Associate Professor, University of WA*

Sponsorship and Exhibition Opportunities

Excellent opportunities exist to showcase your organisation.

For further information, please contact:

Samantha Lister

Tel: (+61 2) 9080 4432 or E-Mail: samantha.lister@informa.com

12:30 Lunch & Networking

1:30 **Treating with Technology - The 5 W's (What, Why, Who, Where & When)**

- Utilising modern technology to improve outcomes for neurologically injured clients is now common practice worldwide, especially in young people
- These new practices keep clients engaged, motivated & eager to return for more therapy
- Repetitive therapy is no longer boring so why are we not providing these services in Australia?
- Case studies of amazing progress using such devices with clients will be discussed – you be the judge

Vicki Abraham, *Managing Director / Occupational Therapist, Abraham OT Services Pty Ltd*

2:10 **Extended Rehabilitation Services for People with Severe ABI**

Jacinta Douglas, *PhD, Professor of Acquired Brain Injury (Summer Foundation Chair, Living Well with Brain Injury), Living with Disability Research Centre, School of Allied Health, La Trobe University*

Co-presenter to be advised

2:50 Afternoon Tea & Networking

3:20 **Facing the Challenges of Distance Head On – Collaboration & Cooperation Between Services**

- Outcomes of an Indigenous male with an ABI residing in a small community
- Challenges encountered & innovative problem solving
- Specific goal driven neurological rehabilitation to improve quality of life
- Financial & logistical constraints, transfer of knowledge, acquisition of equipment, maintaining client's connection to home & community, & retaining service viability

Adelene Yap, *Rehabilitation Coordinator, Brightwater Care Group*

4:00 **How to Cope with a Stranger in your Lounge Room – Challenges of Receiving & Providing a Care Program at Home**

- Intervention from multidisciplinary team members to address & mediate, when the needs of clients & their families are incompatible with the objectives & requirements of the care agencies & support workers going into their homes
- Tension that exists between having a private home & workplace as a shared environment
- Case studies - Issues that arise when working with complex psychosocial dynamics
- Consideration of a framework to prevent the breakdown of care programs rather than relying on crisis intervention

Samantha Grant, *Director - Senior Clinical Psychologist, inspire rehab & psychology*

Robina Moubarak, *Senior Social Worker, Brain Injury Rehabilitation Unit Community Team, Liverpool Hospital*

4:40 Closing Remarks from the Chair, followed by Networking Drinks 

DO NOT MISS

Optional Site Visit of the Royal Rehab Ryde, Sydney
For further details, please visit www.informa.com.au/abi

8:30 Registration & Coffee

9:00 Opening Remarks from the Chair

9:10 **Concussion in Australia – Evaluation, Management & Education**

- How concussion is viewed in Australia & media – Current research & understanding
- How concussion is evaluated & managed in Australia – Issues & considerations
- How common is Post-concussive syndrome?
- The future of concussion management – Discussion & suggestions
- Mission & strategies of Concussion Australia

Laura Anderson, *Neuropsychologist & President, Concussion Australia*

9:50 **Alcohol & Drug Related Brain Injury**

- The nature of alcohol related brain injury over the whole lifespan
- Which illicit drugs cause brain injury
- How we can predict who is likely to sustain substance-related brain injury
- Practical approaches to management of alcohol & drug related brain injury currently
- Moving forwards, what approaches to management of alcohol & drug related brain injury we need to be working towards

A/Prof Yvonne Bonomo, *Physician in Addiction Medicine & Adolescent Medicine; Director, Department of Addiction Medicine, St Vincent's Hospital, Melbourne; University of Melbourne*

10:30 Morning Tea & Networking

11:00 **PANEL DISCUSSION**

The Overlap Between TBI & Family Violence

- How many women experience brain injury as a result of family violence? Is anyone counting?
- Is it a plausible hypothesis that brain injury can predispose some people to commit violent acts? Does brain injury increase the propensity to commit family violence?
- Despite the increased likelihood that a family violence survivor has a history of brain injury, why is it not standard practice for shelters to screen for TBI?
- What role does brain injury play in the inability for some women to leave violent relationships?
- Why are there no meaningful estimates of the number of children with brain injury caused by violence? What are some of the possible short & long-term repercussions of this?

In addition to raising public awareness about the overlap between TBI & violence, this panel will discuss ways to better identify & assist persons who experience violence.

Deborah Byrne, *Executive Officer, Brain Injury Association of Tasmania*

Dr Janine Martin, *Neuropsychologist*

Visit the website for additional panellists
www.informa.com.au/abi/agenda

11:40 **TAAD: The Aphasia Awareness Delegation. Three Rotarians, Three Brain Injury Recoveries, One Message**

- International studies suggest that community awareness of Aphasia remains low. The repercussions of low aphasia awareness extend beyond the individual to the broader community
- TAAD is a 100% consumer driven initiative. People with Aphasia still have plenty to say
- TAAD's goal is simple – to use an existing community network to make people aware of Aphasia. The response has been overwhelming

Colleen Kerr, *Certified Practising Speech Pathologist; Member, Speech Pathology Australia; Director, Optimal Speech Pathology*

Sean O'Brien, *Consumer*

Dianne Finch, *Consumer*

Bernard Chandra, *Consumer*

12:20 Lunch & Networking

1:10 **Systems & Success – Living Life Fully 20 Years Post Severe ABI as Non-Verbal & with Multiple Disabilities**

A long term case study demonstrating -

- Managing change over 20 years
- Analysis & response to spasticity triggers
- Long term procedural learning to minimise spastic patterns
- Systems approach using person centred partnership to enable full engagement in life
- Health disability interface implication for NDIS
- Improving collaboration & cooperation between services

Margaret Darcy, *Private Community Physiotherapist*

Mary Nolan AM, *Parent & Member of Inability Possibility Inc.*

1:50 **Self-Directed Support – The Benefits & Challenges from My Six Year Journey**

- The NDIS will encourage self-directed/ self-management of supports
- Share experiences of doing this for a family member who has high & complex support needs as a result of a catastrophic ABI from a rural/ remote perspective
- Person centred care & support
- Community based rehabilitation
- Workforce issues & training for disability support workers

Leslee Hogan, *Parent/ Carer & Support Co-ordinator, White Crane Collective*

2:30 Afternoon Tea & Networking

2:50 **Resilience, Participation & Belonging Post ABI - Lived Experience Based Peer Support Programs & their Applicability in an NDIS World**

- Key research projects underpinning the developed model – Building approach, evaluations, findings & evolution
- Consumer perspectives (we are member led)
- Local initiatives backed by research
- Promoting self-advocacy in NDIS
- Innovative models of care
- Support for family & carers

Dr Jennifer Farnden, *Manager, Families4Families Incorporated*

3:30 **SSAYiT – Supporting SA Youth Initiative Transition Program**

Engaging people with ABI or other disability that impacts cognitive functioning to:

- Explore vocational aspiration
- Develop skills to be confident
- Reduce barriers, increase coping skills & self-confidence
- Maximise capacity & real-world functioning; &
- Enhance mental wellbeing & functioning

Amy Ambagtsheer, *Program Coordinator, Brain Injury SA*

4:10 Closing Remarks from the Chair & Close of the Conference

National Acquired Brain Injury Conference

8 – 9 November 2016 | Royal Rehab, Ryde, Sydney

3 Easy Ways to Register

WEB

www.informa.com.au/abi

Telephone

+61 (0)2 9080 4307 – Quoting P16A14

Email

info@informa.com.au – Quoting P16A14

Stay Connected



LinkedIn www.informa.com.au/linkedin/healthcare



Twitter [#abi2016](http://www.twitter.com/healthcareprof)



Blog www.informaustralia.wordpress.com



YouTube www.youtube.com/informaoz



Google+ www.informa.com.au/googleplus



Slideshare www.slideshare.net/informaoz/tag/abi16

Pricing Details

Register Early & Save	Early Bird Rate				Standard Rate		
	Book & pay on or before 23/9/16				Book & pay from 24/9/16		
Conference Package	PRICE	GST	TOTAL	SAVE	PRICE	GST	TOTAL
Two day conference	\$1,195.00	\$119.50	\$1,314.50	\$330	\$1,495.00	\$149.50	\$1,644.50

Concession rate for person with a brain injury, their family and carers - \$100 + GST = \$110

SPECIAL PRICE DISCOUNT FOR GROUP BOOKINGS

Book 3 delegates and receive the 4th delegate pass at no cost.

To take advantage of this offer, call us today on 02 9080 4307 or email info@informa.com.au

Note: All delegates must be from the same company and register at the same time to qualify.

Venue Details: Royal Rehab, 235 Morrison Rd, Ryde, Sydney, NSW 2112

Phone: (02) 9808 9222, www.royalrehab.com.au

For full terms and conditions, please visit:
www.informa.com.au/abi



Use your QR Reader App on your smartphone and scan this code to take you directly to the website